

*It's your future. Reach out and grab it.*

**TROY**  
UNIVERSITY



# In the future,



Graduate ViewBook.pdf

## SOMEONE will develop a fabric that allows children's clothes to grow with them.

### STANDING ON THE THRESHOLD RECOGNIZING A WORLD OF CHANGE

In this fast-paced and ever-evolving world, the face of the "traditional" college student has evolved from that of a generation ago. TROY recognizes that students of today want careers that are full of excitement and promise in a world where change is constant.

At Troy University, we are committed to providing our students with educational opportunities that are cutting-edge and of the highest caliber. By choosing to enroll at TROY, our students will be choosing paths that prepare them to be competitive and successful in these challenging new environments. Troy University understands the demands of the non-traditional student and welcomes you as you embark on your lifelong learning adventure.

### THE FACE OF A NON-TRADITIONAL STUDENT

TROY's student population features a diverse mix, including traditional and non-traditional students working together in classrooms, career fields and communities. We realize not all students follow the traditional route from high school directly to college. Non-traditional students may have children living at home, a full-time job or plans for higher education that were interrupted.

We recognize your commitment, whether your decision reflects a desire to improve your self-worth, advance your career or simply complete a journey. The faculty and staff at TROY understand the additional responsibilities that come with being a non-traditional student. We are committed to helping you realize your goals by offering a variety of support services to students taking the non-traditional road to higher education. Whether you are returning, transferring or starting over, we are sure you will find your experience at Troy University challenging and rewarding!

### HISTORY

Established in 1887, Troy University offers students an education that is recognized for its outstanding academic programs and focus on the individual student. Responding to the growing educational needs of our students is the cornerstone of a century-long tradition of service. Troy University recognized early on the importance of making academic programs available outside the Troy campus. Troy University now serves more than 27,000 students in numerous states and foreign countries. In Alabama, we are prominently located in Troy, Phenix City, Montgomery and Dothan.

## ACCREDITATION

Troy University is accredited by the Commission on Colleges of the Southern Association of Colleges and Schools to award associate, bachelor's, master's and educational specialist degrees.

Troy University is a public University providing undergraduate and graduate degrees through our College of Arts and Sciences, the Sorrell College of Business Administration, the College of Health and Human Services, the College of Communications and Fine Arts, and the College of Education. Troy University is accredited by both regional and national associations and has received high marks from the Alabama State Department of Education. With more than 80 programs of study, the University's emphasis on academics is complemented by dedication to public service, applied research and lifelong learning.

## SPORTS

It is TROY's established, strong tradition of excellence in both academics and athletics that inspires pride among students, faculty and alumni. Troy University proudly supports 16 Division I intercollegiate athletic teams. This dominant, national sports presence unifies every TROY student, and each campus resonates with pride every time we take the field.

## THE CLASSROOM AND BEYOND

### Flexibility

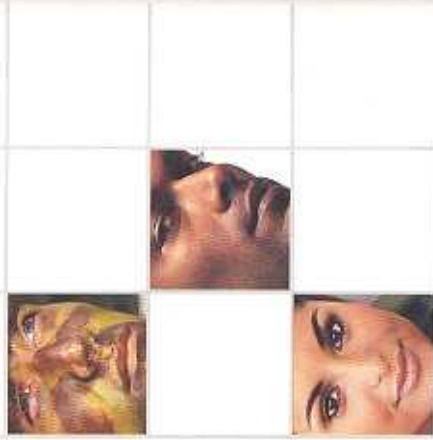
TROY knows life is demanding, particularly for the student who is also juggling a full-time career and family commitments. We are dedicated to anticipating and adapting to the rapidly evolving world that our students face. To help eliminate any obstacles standing between our students and their educational goals, we offer a unique blend of options and flexibility that allows students to choose the "type" of classroom that best suits them.

### Traditional and non-traditional opportunities

TROY is committed to meeting each student's individual needs online or on campus. From traditional brick and mortar classrooms to around-the-clock interactive online services, students have the freedom to further their education on their terms and take their careers to the next level. To respond to these needs, TROY has tailored learning programs to enable students to take classes and complete course work when and how it is most convenient.

Classes and courses are as varied and unique as each individual student. Some classes are taught in the traditional classroom setting, while others may have a combination of online or video components that include live class-on-tape or televised courses. Some classes require attendance on campus for a portion of the course

while allowing students to complete the remainder from the comfort of a home or office. Already a leader in applying cutting-edge technology to the delivery of education, TROY continues to merge the most innovative presentation technologies with solid traditional values.



# [What will you do?]

# Degree Programs

Troy University provides high-quality educational programs to challenge students and help them succeed. Students can earn an associate, bachelor's, master's or education specialist degree in select areas, obtain certificates or participate in a variety of professional development and personal enrichment courses.

## Dothan

### UNDERGRADUATE PROGRAMS

#### Associate Degrees

- > Associate of Science Degree with concentrations in:
  - Archival Studies
  - Biology
  - Business Administration
  - Chemistry
  - Computer Science
  - Criminal Justice
  - Earth and Space Studies
  - English
  - Geography
  - History
  - Humanities
  - Math
  - Physical Science
  - Political Science
  - Psychology
  - Sociology
  - Social Science

#### Bachelor's Degrees

- > Biology
- > Chemistry
- > Computer Science
- > Criminal Justice
- > English
- > History with concentrations in:
  - American/Latin-American
  - European-Asian/African

- > Mathematics
- > Psychology
- > Social Science
- > Sociology
- > Early Childhood Education
- > Elementary Education
- > Secondary School Education with concentrations in:
  - Biology
  - Chemistry
  - English/Language Arts
  - General Science
  - History
  - Mathematics
  - Social Science

#### Special Education

- > Collaborative Teacher (K-6)
- > Special Education with a concentration in:
  - Accounting
  - General Management

#### Master of Science

- > Accounting
- > General Management
- > Master of Science in Human Resources Management
- > Master of Science in Counseling and Psychology with concentrations in:
  - Community Counseling
  - Corrections Counseling
  - Rehabilitation Counseling
  - Substance Abuse Counseling

#### Resources and Technology Management (Bachelor of Applied Science)

### GRADUATE PROGRAMS

- > Master of Science in International Relations
- > Master of Science in Education
  - Early Childhood Education
  - Elementary Education
  - Gifted Education
  - Secondary School Education with concentrations in:
    - Biology

#### General Studies

- English
- History
- Language Arts
- Mathematics
- Social Studies
- Special Education with a concentration in:
  - Collaborative Teacher (K-6)
- School Counseling
- School Psychology
- Educational Leadership
- Non-Traditional (Alternative Class A) with concentrations in:
  - Early Childhood Education
  - Elementary Education
  - Secondary Education

#### Master of Business Administration

- > Accounting
- > General Management
- > Master of Science in Human Resources Management
- > Master of Science in Counseling and Psychology with concentrations in:
  - Community Counseling
  - Corrections Counseling
  - Rehabilitation Counseling
  - Substance Abuse Counseling

#### Master of Science in Post-Secondary Education

- > Early Childhood Education
- > Elementary Education
- > Educational Leadership
- > School Counseling
- > School Psychology

#### Education Specialist Degrees

- > Early Childhood Education
- > Elementary Education
- > Educational Leadership
- > School Counseling
- > School Psychology

## Montgomery

### UNDERGRADUATE PROGRAMS

#### Associate Degrees

- > Business Administration with a concentration in:
  - General Business or Management (U.S. Govt. affiliation required)
- > Computer Science
- > General Education
- > Associate of Arts or of Science with concentrations in:
  - Business
  - Business Information Systems
  - Child Care
  - History
  - Natural Sciences
  - Political Science
  - Psychology
  - Social Science

#### Bachelor's Degrees

- > Accounting
- > Banking & Finance
- > Business Administration with concentrations in:
  - Computer Science
  - General Business
  - Management
- > Computer Science
- > English with a concentration in:
  - Technical or Professional Writing
- > History
- > Marketing, Management & Research
- > Mathematics
- > Political Science
- > Professional Studies
- > Psychology
- > Resources Management
- > Social Science

# Phenix City

## UNDERGRADUATE PROGRAMS

- Bachelor's Degrees**
- > Business Administration with concentrations in:
    - Accounting
    - General Business
    - Human Resources Management
    - Information Systems
  - > Elementary Education K-6
  - > Human Services
  - > Psychology
  - > Rehabilitation
  - > RN to BSN
  - > Social Work

- > Education Specialist Degrees
  - > Elementary Education
  - > Educational Administration
  - > School Counseling
- Certification Programs**
- > Fifth Year Educational Administration
  - > Family Nurse Practitioner

*Programs subject to change. This represents a list of current programs which may be altered to meet the purposes and objectives of the University.*

## GRADUATE PROGRAMS

- > Master of Business Administration
  - > Master of Science in Human Resources Management
  - > Master of Science in Management with concentrations in:
    - Applied Management
    - Public Management
  - > Master of Science in Computer Science
  - > Master of Science with majors in:
    - Social Services Counseling
    - School Counseling
    - School Psychology
    - Community Counseling with specialties in:
      - Substance Abuse Counseling
      - Vocational Rehabilitation Counseling
  - > Master of Science in Adult Education
  - > Master of Science in Post Secondary Education with concentrations in:
    - English
    - History
    - Mathematics
    - Political Science
    - Psychology
  - > Master of Science in Elementary Education (A)
- Education Specialist Degrees**
- > Community Counseling
  - > School Counseling
- Certification Programs**
- > School Counseling (A/AA)
  - > School Psychology (A)

## GRADUATE PROGRAMS

- > Master of Business Administration
- > Master of Science in Counseling Psychology with concentrations in:
  - Community Counseling
  - Clinical Mental Health
  - Rehabilitation Counseling
  - School Counseling
- > Master of Science in Education
  - Elementary Education K-6
  - Elementary Education (Alternative Class A) K-6
  - Educational Administration
- > Master of Science in Nursing with concentrations in:
  - Clinical Nurse Specialist
  - Family Nurse Practitioner
  - Nursing Informatics Specialist

## ADMISSIONS CHECKLIST

- > **UNDERGRADUATE**
  - Application for Admission
  - Application Fee Applies
  - Official Transcripts
- > **GRADUATE**
  - Application for Admission
  - Application Fee Applies
  - Official Transcripts
  - Test Scores
  - Letter of Recommendation
  - Education Majors: a copy of Teaching Certificate
  - Education Majors: supplement Experience Form





In the future,

**someone** will transport an iceberg to irrigate a desert half a world away.

#### STUDENT SUPPORT

At TROY, we understand the challenges that face our non-traditional students. Many are juggling marriage, families, jobs and school. Decisions about school, finances and priorities are more complex for you. This is where TROY is here to help. We have a number of organizations and resources to make your transition back to school as smooth as possible. Adult students are among the most successful on campus, and their life experiences give them a competitive advantage.

TROY believes that meeting and exceeding a person's educational goals can be balanced with a demanding career. Whether you want to begin work on a new degree, enhance your career or complete a degree that was interrupted in the past, we are ready to meet your needs.

#### ORIENTATIONS

Each campus offers a unique orientation session tailored to its respective students. Whether it is an online informal course or a one credit-hour orientation class in the evening, students will learn about campus resources, study skills and stress management.

#### COUNSELING AND CAREER SERVICES

Looking for full-time employment can be a full-time job. TROY is committed to providing personal and professional enhancement assistance designed to improve academic and career success to students, staff, faculty and alumni. We have dedicated resources to help students explore and define career options, develop job search strategies, obtain career-related work experience and identify and connect with prospective employers. We provide individual career advisement, job search workshops, a career information library, several job fairs and campus interviews. TROY believes in our students and strives to provide the resources needed to advance their education and open the doors to a future of opportunities.

#### FINANCIAL AID

Troy University uses all available funds to help students gain access to a college education. TROY recognizes that many individuals are simply not able to meet the entire cost of a college education. Therefore, we have a number of programs that can provide students with supplementary funds to help offset these expenses. Programs are comprehensive in nature and range from scholarships to work study opportunities.

# [What will *you* do?]

## QUICK CAMPUS FACTS

### Dothan

- 100% online MBA program
- Evening, day, weekend and live class-on-tape course options
- Wireless campus environment
- In-state tuition rates for five Florida counties and seven Georgia counties
- Small class sizes, 1-21 faculty to student ratio
- One of only two Alabama universities to offer an Archival Studies program

### Montgomery

- The only Montgomery Metropolitan Area institution primarily focused on non-traditional, adult learners
- 29 complete evening degrees, 5 complete online degrees and 2 complete weekend degrees
- Online, television and print-based classes
- Site of historic Rosa Parks Museum
- Site of Davis Theatre for the Performing Arts

### Phenix City

- MBA program available during evenings or weekends
- Evening, day, weekend and live class-on-tape course options
- Five computer labs on campus
- Affordable in-state tuition rates available for 19 Georgia counties
- Small class sizes, 1-22 faculty to student ratio

## CLUBS AND ORGANIZATIONS

Personal and professional growth are not limited to the classroom experience. Extracurricular activities are an important part of the TROY experience. Students are encouraged to find an organization that meets their needs. Here is a sampling of the groups available at our different campuses:

- > Alliance for Cultural Diversity
- > Alpha Sigma Lambda
- > Chi Sigma Iota
- > Creative Writing Club
- > English Club
- > Gamma Beta Phi
- > History Club
- > Institute of Management Accountants
- > Psychology Club
- > Sigma Tau Delta
- > Society for Human Resource
- > Student Alabama Education Association Management
- > Student Government Association



# TROY

---

## UNIVERSITY

To schedule a visit to one of our campuses or for more information about Troy University, please contact us online at [www.troy.edu](http://www.troy.edu) or:

TROY - Dothan Campus  
500 University Drive  
Dothan, AL 36303  
Phone number: (334) 983-6556

TROY - Montgomery Campus  
231 Montgomery Street  
P.O. Drawer 4419  
Montgomery, AL 36103-4419  
Phone number: (334) 241-9506  
Toll-free: 888-357-8843

TROY - Phenix City Campus  
One University Place  
Phenix City, AL 36869  
Phone number: (334) 448-5106  
Toll-free 866-876-9787

[www.troy.edu](http://www.troy.edu)

