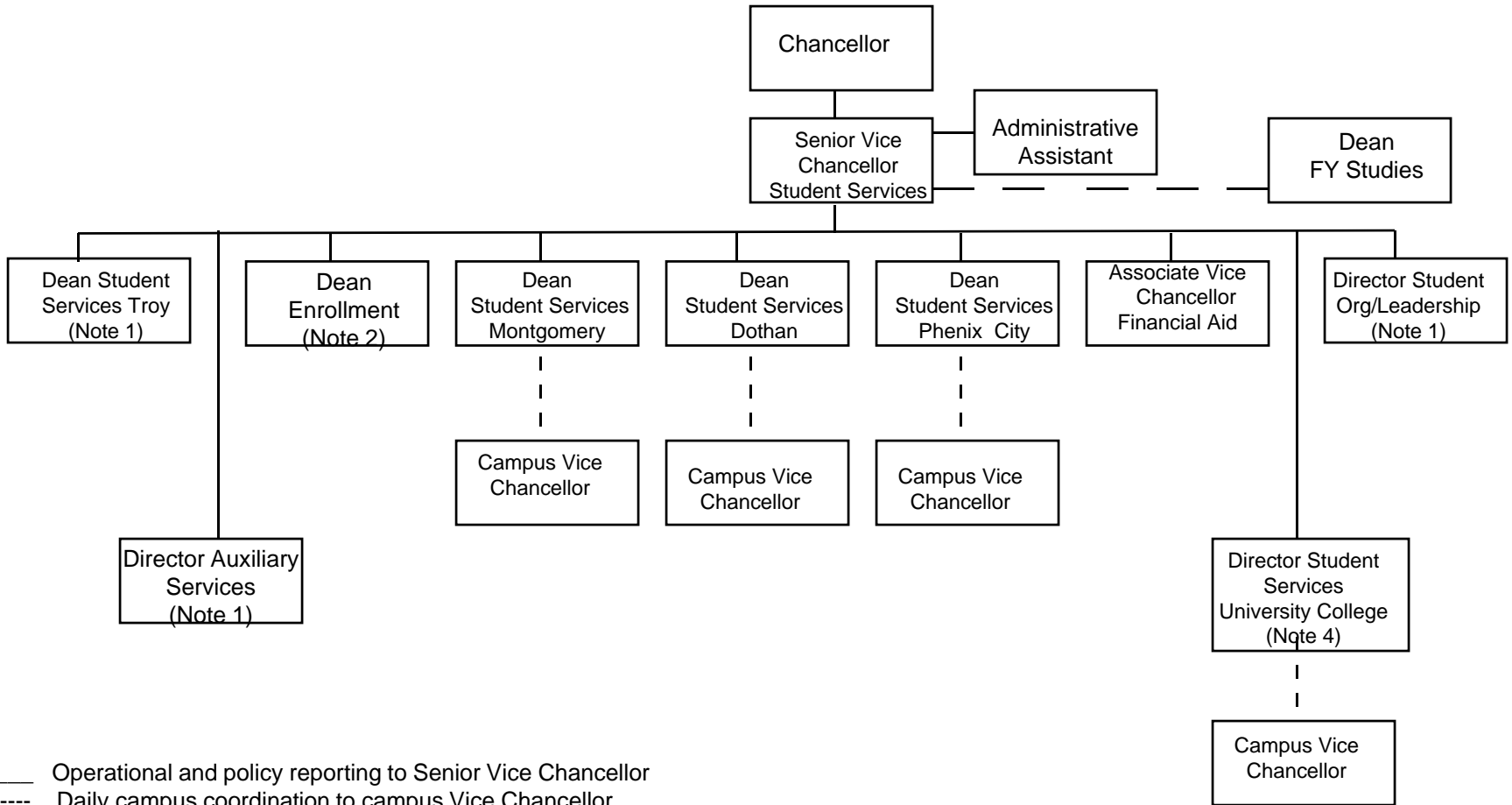


# Troy University Student Services Organizational Chart



\_\_\_\_\_ Operational and policy reporting to Senior Vice Chancellor

----- Daily campus coordination to campus Vice Chancellor

Note 1: Campus oversight of defined functions - - safety/security, bookstore/ID, SGA, counseling, health services, SAVE/personal counseling and fitness/recreation

Note 2: Oversight of Undergrad, Graduate, DL, International and University College enrollment

Note 3: Coordination with Dean First-Year Studies

Note 4: eCampus student issues

Revised September 2007